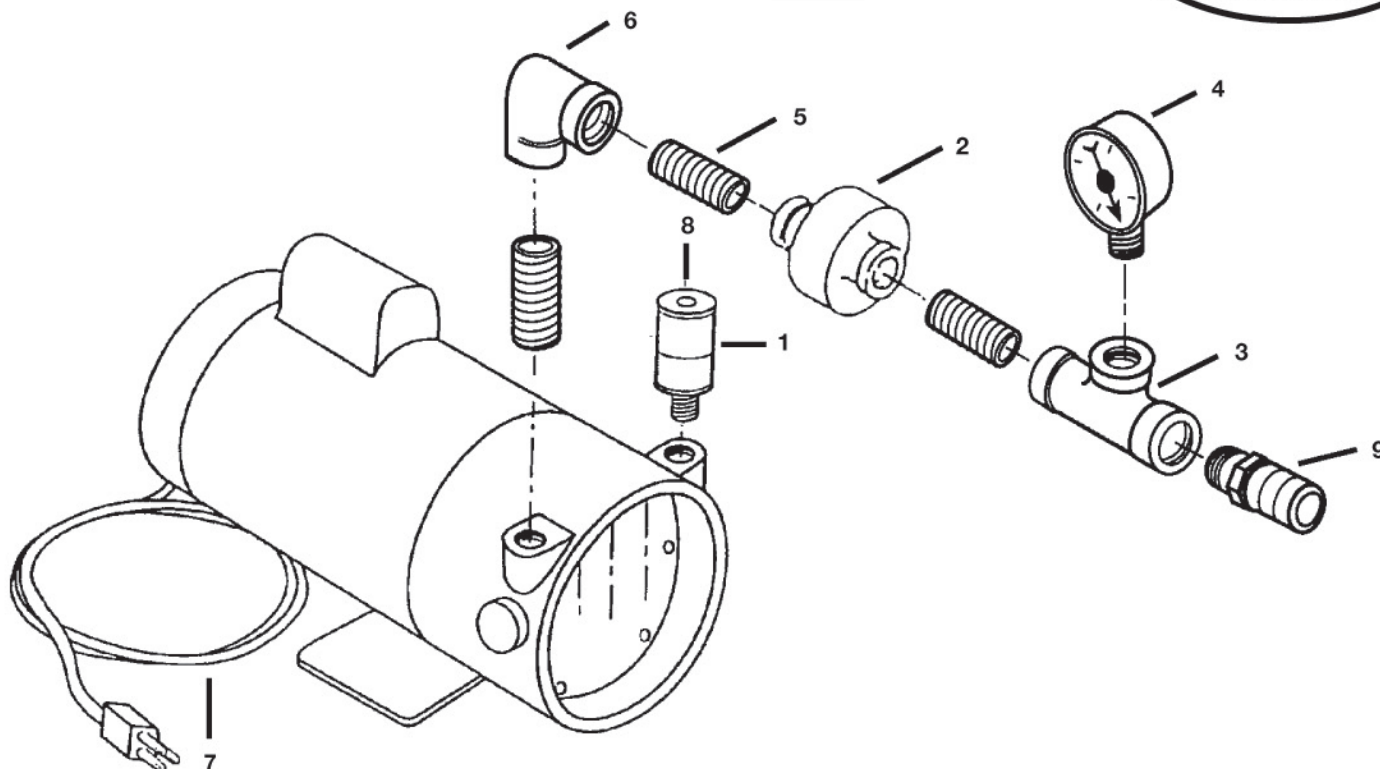


Oil-less Air Pump



BASIC MODEL

9806-00 1/4 & 1/3 HP

Motor - Open Type (Not Explosive Proof) 115 V, Single Phase, 60HZ

ITEM	PART#	DESCRIPTION
1	9700-14	Intake Filter Element
2	9806-02	Exhaust Filter
3	0200-021	1/4" Brass Tee
4	9700-04	Pressure Gauge
5	0200-002	1/4" Hex Nipple
6	0200-070	1/4" Elbow, Brass
7	9700-07	Electric Cord, w/ Ground Plug
8	9700-21	Intake Filter Assembly
9	9806-10	1/4" NPT Male Flow thru Coupler
	9700-11	Pump Cleaning Solution (Not Shown)
	9700-25	Inlet Hose Extender - 25 Ft. (Not Shown)
	9700-30	Inlet Hose Kit - 25 Ft. (Not Shown)

WARNING:

Exhaust filter DOES NOT REMOVE dangerous organic vapors or gases. DO NOT USE this equipment if organic vapors or gases are present. If this air pump is to be used as a breathing air source, the air inlet MUST be located in a CLEAN AIR area, where breathable air can be assured at all times.